



VOLVO S60

PRICE LIST



The All-New Volvo S60 is the sport sedan that rewrites the driving story. Effortless performance meets intuitive technology, while a sophisticated chassis balances comfort and control. And a choice of driving modes puts you at the centre of a dynamic experience.

The interior is tailored around your needs – a place where connected, easy-to-use technology combines with the wellbeing that only human-centric innovation and elegant Scandinavian design can provide.



S60 R-DESIGN

Includes the following:

Safety and security

- 360° camera
- Adaptive cruise control with pilot assist
- Adjustable speed limiter
- Airbags (frontal - driver and front passenger; side - driver and front passenger; side curtain)
- Alarm with interior motion sensors and private locking
- Belt minder all seats
- Blind spot information system (BLIS™) with steer assist and cross traffic alert
- City safety - autonomous emergency braking, collision warning, avoidance, steering and mitigation support with vehicle, cyclist, pedestrian and large animal detection
- Distance alert
- Drive mode settings
- Driver alert control
- Electronic stability control featuring understeer logic control, engine drag control, advanced stability control, corner traction control by torque vectoring and roll stability control
- Head up display
- Hill start assist
- ISOFIX child seat mounting points - second row, outer seats
- Keyless entry with remote tag and handsfree tailgate opening
- Lane keeping aid
- Leather clad key remote
- Lockable glovebox
- Oncoming lane mitigation
- Park assist, front and rear sensors
- Park assist pilot
- Pedestrian pop-up bonnet
- Power child lock, rear side doors
- Pyrotechnical pretensioners, all seats
- Rain sensor
- Run-off road mitigation and protection
- Side impact protection system (SIPS™)
- Tempered glass, side and rear windows
- Tyre pressure monitoring system
- Whiplash injury protection system (WHIPS™)
- Heated front seats
- High performance audio system, 10 speakers
- Humidity sensor
- Illuminated vanity mirrors in sunvisor, driver and front passenger
- Interior illumination high level
- Power folding rear seat backrest and headrest
- Metal mesh decor inlays
- Netpocket on tunnel
- Parking ticket holder
- Power adjustable front seats with memory and 4-way power lumbar support
- Power cushion extension, front seats
- R-Design leather gear knob
- R-Design leather steering wheel with gear shift paddles
- R-Design sport pedals
- R-Design sport seats in fine nappa leather/graphite open grid textile
- R-Design textile carpet mats
- R-Design tread plates
- Remote control buttons in steering wheel
- Road sign information (RSI)
- Sensus 9" touch screen centre display
- Sensus navigation with realtime traffic information
- Smart phone integration (Apple Carplay & Android Auto)*
- Tailored dashboard
- Temporary spare wheel and jack (not on T8 models)
- Voice control
- Warning triangle

Interior

- 12.3" driver display
- 12V outlet in luggage area
- 2 USB connections, centre console
- 4-Zone electronic climate control with cooled glove compartment (2-Zone electronic climate control on T8)
- 230V Outlet lower rear tunnel console (12V on T8)
- Armrest with cupholders and storage, centre rear seat
- Automatically dimmed inner and exterior mirrors
- Bluetooth connection
- Charcoal interior headlining
- CleanZone air quality system
- Digital audio broadcasting

Exterior

- 19" 5-Triple spoke matt black diamond cut alloy wheels
- Chassis, four-c (dynamic chassis on T8)
- Colour coordinated door handles with illumination and puddle lights
- Dual integrated tail pipes
- Emergency brake light (EBL)
- Fog lights in front spoiler
- Headlight high pressure cleaning
- LED illumination with active high beam, active bending lights and Thor's Hammer daytime running lights
- Polestar engineered rank mark on tailgate
- R-Design front grille in gloss black
- R-Design lower rear bumper insert
- R-Design rank mark on tailgate
- Rear view mirror covers in gloss black
- Window trim in gloss black
- Retractable side mirrors
- Wiper blades with integrated nozzles

PRICE: \$82,900 (T5 AWD), \$114,900 (T8 AWD)

*Not all devices are compatible with Apple CarPlay and Android Auto, contact your nearest Volvo Car dealership for more information.

- Not available
- Standard
- Optional
- NCO No cost option

OPTIONS		PRICE	R-DESIGN
INTERIOR			
553	Bowers and Wilkins premium sound	\$4,900	○
504	CD player in centre console storage (not available with T8)	\$400	○
1033	Harman Kardon premium sound	\$1,500	○
752	Heated rear seats	\$350	○
062	Rear window sun curtain	\$350	○
XCX0	Ventilated fine nappa leather with power side support, front seats	\$4,450	○
EXTERIOR			
1047	18" 5-Double spoke matt black diamond cut alloy wheel	NCO	○
236	Laminated side windows and cargo area	\$950	○
030	Panoramic sun roof	\$2,915	○
026	Sport chassis (removes Four-C active damping, not available with T8)	\$790	○

PACKAGES		PRICE	R-DESIGN
LIFESTYLE PACK			
Harman Kardon premium sound Panoramic sun roof Rear window sun curtain		\$3,500	○
PREMIUM PACK			
Bowers and Wilkins premium sound Panoramic sun roof Rear window sun curtain		\$6,000	○
LUXURY PACK			
Backrest massage, front seats Heated rear seats Heated steering wheel Ventilated fine nappa leather with power side support, front seats		\$5,600	○



- Not available
- Standard
- Optional
- NCO No cost option

UPHOLSTERY

Fine Nappa Leather/Graphite Open Grid Textile Charcoal in Charcoal interior, RG0R



Fine Nappa Leather/Graphite Open Grid Textile Slate in Charcoal interior, RGAR



Fine Nappa Leather Perforated Charcoal in Charcoal interior, RC00



Contour Leather Charcoal in Charcoal interior, RA01



UPHOLSTERY

Fine Nappa Leather/Graphite Open Grid Textile Charcoal in Charcoal interior, RG0R

Fine Nappa Leather/Graphite Open Grid Textile Slate in Charcoal interior, RGAR

Fine Nappa Leather Perforated Charcoal in Charcoal interior, RC00

Contour Leather Charcoal in Charcoal interior, RA01

R-DESIGN

●

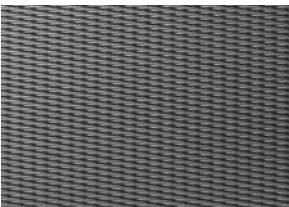
NCO

○

NCO

DÉCOR

Metal Mesh



TO SEE THE FULL RANGE OF INTERIORS, UPHOLSTERIES AND DECOR TRIMS FOR YOUR VOLVO S60, PLEASE VISIT **VOLVOCARS.CO.NZ**

COLOUR

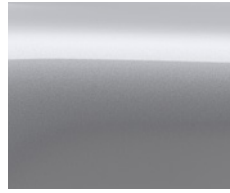
METALLIC



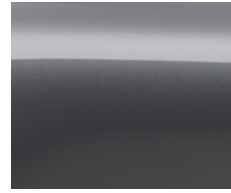
492 Saville Grey



707 Crystal White



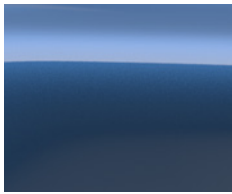
711 Bright Silver



714 Osmium Grey



717 Onyx Black



720 Bursting Blue



722 Maple Brown



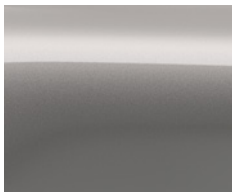
723 Denim Blue



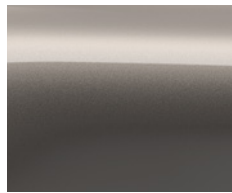
724 Pine Grey



725 Fusion Red



726 Birch Light



727 Pebble Grey

SOLID



614 Ice White



019 Black Stone

WHEELS

STANDARD



19" 5-Triple spoke
Matt Black Diamond Cut

TO SEE THE FULL RANGE OF WHEEL OPTIONS FOR YOUR VOLVO S60,
PLEASE VISIT **VOLVOCARS.CO.NZ**



ENGINES

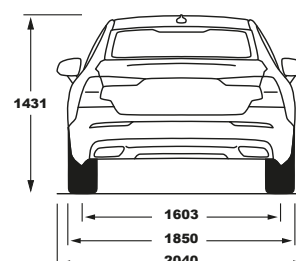
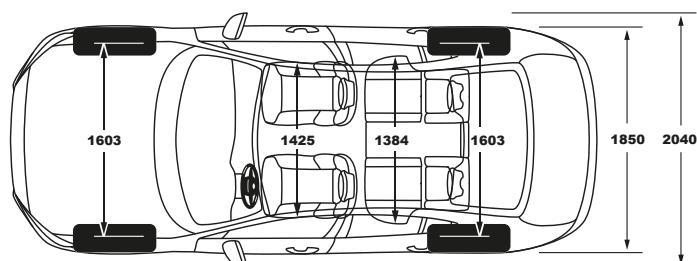
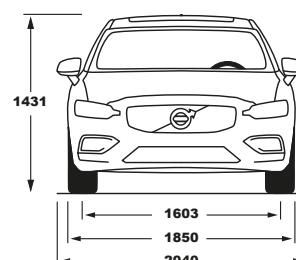
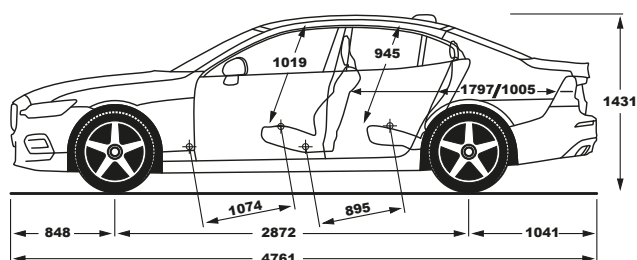
T5 AWD*

Engine type:	2.0 I4 petrol turbocharged
Transmission:	Eight-speed Geartronic™
Max. Power output, kW at rpm:	192 at 5700
Max. torque, Nm at rpm:	400 at 2500-3500
Acceleration, 0–100 km/h in sec:	6.3
Fuel tank, litres:	60
Environmental classification:	Euro 6
Fuel consumption, litres/100 km, mixed cycle:	7.3
CO ₂ g/km:	167
Towing capacity, braked kg:	1800

T8 AWD*

Engine type:	Plug-In Hybrid with 2.0 I4 petrol supercharged/turbocharged and electric motor	
Transmission:	Eight-speed Geartronic™	
Max. Power output, kW at rpm:	Petrol: 246 at 6000 Total: 311	Electric: 65
Max. torque, Nm at rpm:	Petrol: 430 at 2200-5400 Total: 670	Electric: 240
Acceleration, 0–100 km/h in sec:	4.3	
Fuel tank, litres:	60	
Environmental classification:	Euro 6	
Fuel consumption, litres/100 km, mixed cycle:	2.0	
CO ₂ g/km:	46	
Towing capacity, braked kg:	2000	

DIMENSIONS



* S60 R-Design variants receive Polestar Engineered Optimisation as standard.

Fuel consumption and emissions based on European combined cycle. Accessories and / or options fitted to vehicles may affect vehicle performance, fuel consumption and emissions. All technical data may be subject to change. Contact your nearest Volvo Car dealer for the latest information.

Our Lifestyle Collection includes a wide range of lifestyle accessories – from Swedish crystal and crafted leather bags, to clothing, watches and more selected items. To view the complete collection, please visit collection.volvocars.com.



YOUR COMPLIMENTARY SERVICE PLAN. SERVICE BY VOLVO. A SIMPLER WAY.

We want your life to be uncomplicated and to ensure you'll always get the most out of your Volvo which is why you now receive a three year/unlimited kilometre service plan with the purchase of a new Volvo.

No matter what your car may need, your authorised Volvo workshop will take care of it for you and make sure your Volvo stays in tip-top shape.

We have our own approach to service that's personal and efficient – and which takes care of you as well as it takes care of your car.

It's because everything we do is about finding new ways to make life simpler thanks to our cars as well as our service.

MAINTENANCE SERVICE.

When you bring your Volvo in for a maintenance service at an authorised Volvo workshop after your three year/unlimited kilometre service plan has lapsed, we include a few extras to make your visit more convenient and rewarding. We update your car's software to the latest version, which means your Volvo can become even better at every service. We extend your Volvo Assistance for another 12 months so that you'll be assured to get quick help around the clock should anything happen. We perform a complimentary health check on your car, offer alternative transportation if you need it while your car is being serviced, and we will also wash your Volvo for you.

V O L V O